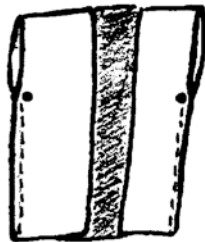
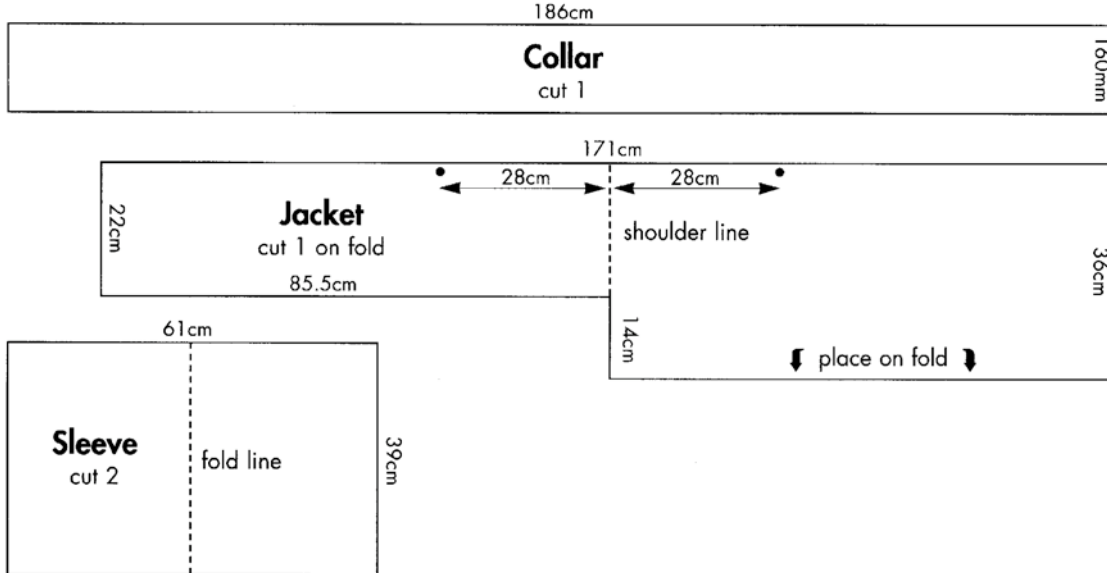


# MAKING A HAPPI COAT

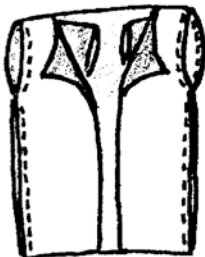
The *happi* coat is an informal short jacket once worn by all kinds of Japanese workers – firefighters, gardeners, shop assistants and crafts people. Today, people wear happi coats at festivals or *matsuri*. Designs vary, but often incorporate mon (see p.9). These simple instructions show how to make your own happi coat. To cut out the fabric, you will need to redraw the pattern pieces using the measurements given. These measurements have incorporated 2.5cm for all seam allowances. This pattern is for a one-size garment. **YOU WILL NEED:** 2.4 metres of 90cm width fabric, eg. calico, lightweight cotton (The collar may be cut in a contrasting colour – in this case, use 2.2m +1.0m for the collar, cutting the collar on the fold).



1. With right sides together, fold front flaps of jacket along shoulder line and press, matching bottom edges and circles. Pin and stitch side seam up to circles. Press seams flat.

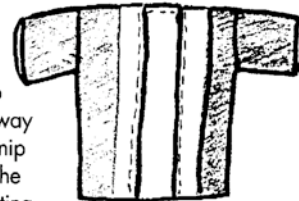


2. With right sides together fold sleeve along fold line. Pin and stitch sleeve along long edge. Press seam flat.

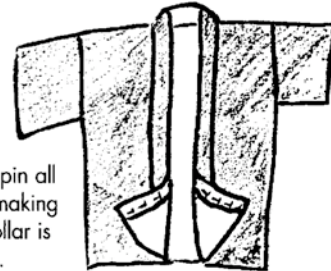


3. Insert sleeve into arm hole (right sides together); match seam of sleeve with the side seam, pin and stitch. Press seam flat and clip seam allowance if necessary, to make seam lie flat.

4. Pin the collar to the opening of the jacket all the way round, taking care to ease the fabric into the neckline. Stitch all the way round. Make a diagonal snip as far as the seam line at the corners of the neckline, cutting through both thicknesses of seam allowance.



5. Open out the seam and press flat. Fold collar over the seam, turn under a 2.5cm hem on the inside and pin all the way round. Press, making sure the width of the collar is even all the way round.



6. Stitch round the inside edge of the collar, about 0.5 cm from the edge, stitching through all thicknesses. Hem the sleeves and bottom of the jacket and press.

